

# Roboshot MaxiJet E2



MaxiJet E2 is a Mid-sized shotcrete rig designed and built for tramming in harsh conditions, steep incline and long distances.

The robust and reliable four-wheel drive, front wheel steer drive line consists of a two speed hydrostatic transmission powered by a choice of diesel engines connected to Dana steering axles. It's compact design makes the MaxiJet E2 extremely manoeuvrable even in the tightest, most difficult situations. The MaxiJet E2 incorporates the efficient and reliable Jacon piston concrete pumping system, a powered by an auxiliary 55kw Electric Power Pack. An onboard 37kw electric air compressor 7.1m<sup>3</sup>/Min @ 7BAR makes MaxiJet E2 the complete self-contained shotcrete rig.

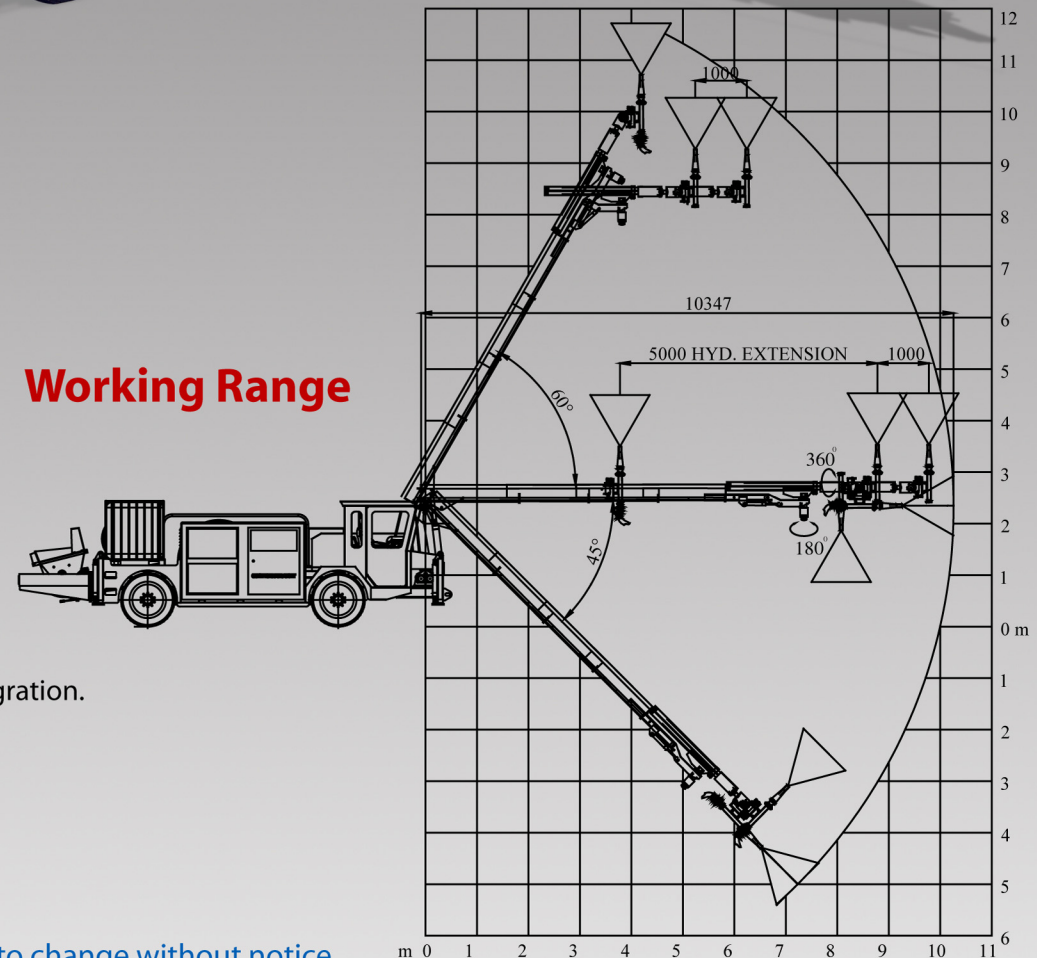




## Specifications

- 4 cylinders CAT Diesel Engine 3054 CT.
- Diesel Engine rated at 75kw @ 2300RPM, USA.
- Dana steering axle's front. Four wheel hydrostatic drive.
- 2 speed Dana planetary transmission.
- Travelling Speeds 25 kilometers per hour.
- Hydraulically applied four wheel internal wet disc brakes.
- SAHR internal park brake built-in rear axle.
- Catalytic converter.
- 300-15 ply tyres and spare wheel.
- Full road lightings/warning stroke lights.
- High Pressure Water wash down water pump.
- Jacon S20 concrete pump ( 125mm Bore with 1000mm Stroke).
- Rated output 20 cubic meters per hour.
- Triple extension 11 meters reach slewing boom with meters reach.
- 360 degree robot rotation, robotic head with 360 degree slew angle, 130 degree nozzle lilt.
- Oscillator on robotic head.
- Operating and parts manual.
- Peristaltic type chemical dosing pump with electronic automatic/manual integration.
- Electronic chemical flow meter and totaliser.
- Cordless remote control with corded back up.
- 55kw auxiliary electric power pack for all shotcreting functions.
- On board 37kw electric compressor 7.1m<sup>3</sup>/min @ 7BAR.
- Cable reel with 50m of cable. Manual operation.
- Dual FOPS and ROPS cab.

## Working Range



Specifications subject to change without notice.



**Jacon Technologies Pty Ltd.**

24 Egerton Street, Silverwater NSW 2128, Australia

Telephone: (612) 9737 9028 Facsimile: (612) 9737 9031

Email: [engineering@jacon.com.au](mailto:engineering@jacon.com.au) Website: [www.jacon.com.au](http://www.jacon.com.au)